



INTRODUCING THE TUSCANY BY PATHFINDER



TUSCANY IS RENOWNED FOR ITS ROLLING HILLS, OLIVE GROVES AND ANCIENT OAKS...

The Pathfinder Tuscany Lodge brings that rustic, getaway feel where all stresses are relieved and quality time is captured.



The Tuscany holds the best aspects of the Italian region, having a light and breezy feel with a rustic kitchen that begs for a wholesome pasta dish for the extended family visits.



Arriving at the Tuscany, you are greeted by 2 serene sofas, a traditional cream electric wood burning stove sitting on a raw slate hearth and a wooden coffee table to put your feet up with a 'night cap' after an invigorating day out exploring the landscape.

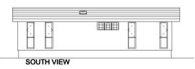
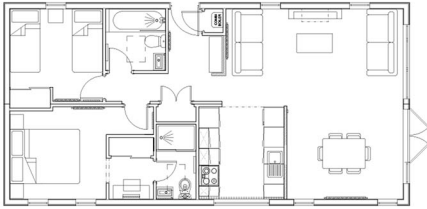
The furniture is placed in the perfect position to get lost in a book, exposed to the views with the French doors wide open allowing the late afternoon light to pour in.

 01482 840 600

 www.yorkshireretreats.co.uk

 info@yorkshireretreats.co.uk





EXTERNAL

Canexel exterior
4 long windows
1 large long picture window
French doors to dining area
2 long window to master bedroom

INTERNAL

Plasterboard walls
Walnut washstands in bathroom and ensuite
Electric wood burning stove
Large distressed table and 8 rattan chairs

SPECIAL FEATURES

Feature fireplace
Cedar cladding in kitchen with Georgian bar windows
Freestanding traditional wardrobes
1200w shower
2 Velux roof lights

